

# FLEX Collection



# One Complete Package

It has long been proven that standing throughout the day is good for your health. It is recommended that you stand for 45 minutes out of every hour of your day, and sit for 15 minutes. In a traditionally fixed workspace for a "desk job" this is nearly impossible without a height adjustable table. With a constantly changing work environment, our furniture should not be left behind but be able to change with it.



By providing a healthier work environment, along with more control over their workspaces, people tend to be more productive. By incorporating the MTM collection of products into your workspace you start encouraging users to get up and move.



**Flex Single  
Monitor Arm**

**Modesty Panel  
with Wire  
Manager**

**Flex Electric  
3 Leg Table**

**BBF  
Cushion  
Ped**

# Rise to the Occasion

With a constant changing work environment, your furniture requires the versatility to adapt. Giving the user control of their workspace, the Flex Adjustable table allows seamless transition between sitting and standing throughout the day to accommodate the wide range of ergonomic requirements for a healthy body. By providing a healthier work environment, along with more control over their workspaces, people have the ability to be more productive. Incorporating the Flex Adjustable table into your open, private or training spaces, you empower users to work how they want to - It's easy, quick and quiet to operate.



## Features

- Manufactured to BIFMA standards
- 5 year motor & electrical warranty
- Adjustment speed of 1.5" per second
- Anti-collision technology
- Noise level of <50 dB
- Load capacity of 200 lbs for rectangle units
- Load capacity of 300 lbs for corner units
- Lifetime frame warranty
- Lowest energy consumption per watt in the industry

## Freedom

With the touch of a button, people can control their worksurface height, enabling them to determine their optimal working position and to change position whenever it suits them with relative ease.

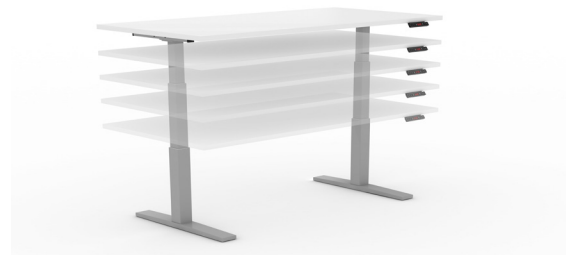
### Flexible Width

With one single model, you can support a worksurface from 48"W to 84"W. Flex Adjustable bases work with you and not against you.



### Flexible Height

People come in all shapes and sizes and the Flex Adjustable table can meet a variety of needs and workstyles with a height range of 25" to 50" high.



### Corner Conditions

Available for corner conditions of 90°, 120°, and 135° to integrate seamlessly into any office environment. Offering a clean design in a holistic package.



### Flexible Controls

The digital memory controls can save up to 3 set positions, making it easier to have consistent adjustment. The standard control features soft start and stop with anti-collision safety.





# Manage Your Wires

## Modesty Panel Wire Manager

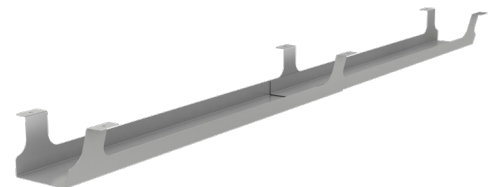
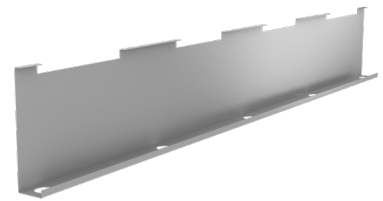
**Modesty Panel:** This fixed height metal modesty panel also allows for wire management in one single contained unit. Available in 50" and 62" widths and 12" high.

## Cable Manager

**Wire Management:** Flexible plastic conduit allows you to manage wires and cords on fixed or height adjustable tables. Overall length is 51.25" and links can be removed to customize the length.

## Adjustable Wire Trough

**Adjustable Wire Trough:** Telescoping wire trough allows a single unit to be used for a variety of table sizes. Unit telescopes from 36" up to 69" and allows access from all sides for easy and simple wire management.



# Manage Your Space

## Tool Rail

**Accessory Tool Rail:** The aluminum constructed rail allows the user to lift desk organization up for a more usable worksurface. Accessories include a phone caddy, pencil cup, paper management & a monitor arm.

Length: 55" and 63" x 15.75" high

## Monitor Arms

**Single and Dual Arms:** Monitor arms allow exact position of your monitor to meet all needs and has long been used as a great ergonomic solution.

Size: Up to 30" Monitors; Weight: 22lbs.

## Pedestal Filing Cabinet

**Box Box File:** Steel constructed mobile pedestal filing cabinet. Box Box File drawer configuration allows for versatile storage options. Pencil tray included.

18.5"d x 15"w x 23.75"h

**Slim Ped Box File:** 18.5" x 11.75"w x 21.25"h



# Time to Connect

## Flex Connect Power Module

In today's high-tech world we are all constantly wired. With connected devices in our pockets, on our wrists and on our lap, it's important to stay connected and nothing prevents that like a low battery.

With our Flex Connect Power Modules, you can stay connected and charge all your devices at once. All modules come with 3 power outlets and 2 USB ports. Available in black or white as a clamp mount, under-surface mount or in-surface mount the design aesthetic will fit all environments.





# Sit Back and Relax

## Have a seat and stay awhile

This 300lb weight capacity chair is all you need in today's office environment. The ergonomic and curved back of the Today chair allows for a comfortable sit that hugs your back and supports the human body. A mesh style designed poly back pattern allows for a functional and fun design that stays clean for lifetimes to come. The chair is designed and built with three simple pieces. The frame, the back, and the seat. The single polypropylene seat is removable and easy to clean. Allowing for design refresh to occur down the road or simple fixes in the field. The seat is not only stylish but the thick streamlined arc design allows for a concave fit with a comfortable sit.





### **Complete Line Package:**

- Fixed Rectangle Bases
- Electric Rectangle Bases
- Electric Corner Bases
- Fixed Tables (Bases with Tops)
- Electric Tables (Bases with Tops)
- Mobile Box/Box/File Storage Pedestal
- Mobile Slim Box/File Storage Pedestal
- Single Monitor Arm
- Dual Monitor Arm
- Slat Rail with Accessories
- 50" Modesty Panel
- 62" Modesty Panel
- Adjustable Wire Trough
- Cable Manager
- Power Module w/ 3 Mounting Styles

### **Base Finishes:**

- Silver, Black or White

### **Top Finishes:**

- See laminate card, specials available

### **Monitor Arm:**

- Silver

### **BBF Storage:**

- Silver, Black, White

### **Slim Storage:**

- Silver

### **Wire and Cable Management:**

- Silver, Black, White

### **Power Modules:**

- Black or White

*other colors available upon request*

**FLEX**  
Collection



For more information, visit  
[www.mtindustries.com](http://www.mtindustries.com)

© 2019